



Press Release

ULTRASPECT'S REDUCED-DOSE DUAL-ISOTOPE (TI-201 and Tc-99m) AND ENHANCED-RESOLUTION TI-201 CARDIAC IMAGING SOLUTIONS TO THE TECHNETIUM SHORTAGE

UltraSPECT Offers Thallium Imaging Solutions in Nuclear Cardiology (Enhanced-Resolution Single-Isotope and Reduced-Dose, Shorter-Time Dual-Isotope Cardiac Imaging) with No Trade-Off in Imaging Time and Image Quality

Auburndale, Massachusetts, March 9, 2010 —UltraSPECT, a leading provider of Nuclear Medicine image reconstruction products for enhancing the performance of gamma cameras by shortening acquisition times, enabling reduced radiopharmaceutical doses and increasing image resolution, announced today that its two cardiac products, Xpress.Cardiac™ and Xpert3.Cardiac™, support TI-201 imaging. These products utilize UltraSPECT's proprietary WBR™ image reconstruction capabilities to enable reduced-dose and enhanced-resolution Thallium imaging, providing an imaging alternative that can help the NM practitioners cope with the disruptions expected in Technetium supplies and mitigate their impact on the NM practice.

Due to the impact of the Canadian reactor shutdown combined with the recently announced six-month repair plan of the Dutch reactor, the global shortage of Tc-99m is expected to remain grave in the next few months, leaving the practice of Nuclear Medicine in a very precarious position:

- Inability to provide patients with needed Nuclear Medicine tests
- Longer delays in scheduling of exams for most patients
- Use of reduced-dose imaging protocols with risk of inadequate clinical outcomes
- Loss of business to other imaging modalities such as CTA, Echo and cardiac PET

UltraSPECT's clinically proven imaging alternatives using the FDA-cleared and CE mark-approved Xpress.Cardiac and Xpress3.Cardiac products help weather this period. The products, in addition to allowing the utilization of lower dose imaging protocols using Tc-99m with no compromise in terms of imaging acquisition times and diagnostic value, support reduced-dose and enhanced-resolution TI-201 imaging, thus alleviating the impact of the Technetium shortage, while at the same time reducing patient radiation exposure. UltraSPECT products feature connectivity to the imaging systems of all three major NM camera manufacturers, supporting most existing camera hardware and workstation versions.

The TI-201 Stress/Rest protocol using the Xpress.Cardiac is performed with scan times and radiopharmaceutical doses as defined by ASNC imaging guidelines, but with the resulting Stress and Redistribution Rest images displayed in unprecedented image resolution. John Zeitz, M.D., Chief of Nuclear Medicine at Beaumont Hospital in Troy, MI stated, "UltraSPECT has allowed us to acquire high-quality gated SPECT images with TI-201, without increasing scan times. Previously, we would have to increase our imaging time by 50% in order to achieve decent image quality for the gated cine reconstruction."

The one-day dual-isotope (TI-201 and Tc-99m) protocol performed with the Xpress3.Cardiac combines reduced doses with shorter scan times. Reduced-dose, shorter-scan-time Rest

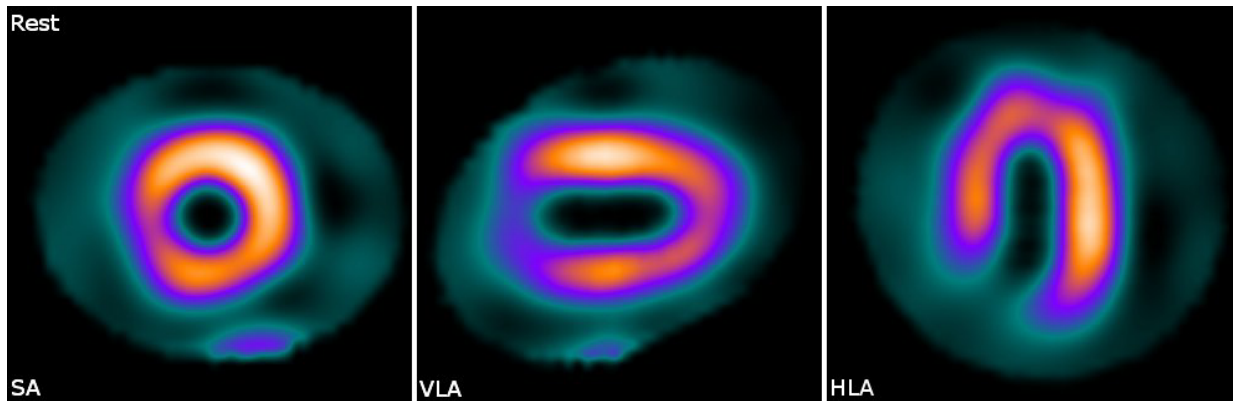


Tl-201 imaging is followed by reduced-dose, shorter-scan-time Tc-99m Stress imaging, rendering the procedure safer and more comfortable for the patient, while ensuring sustained/increased patient throughput for the practice:

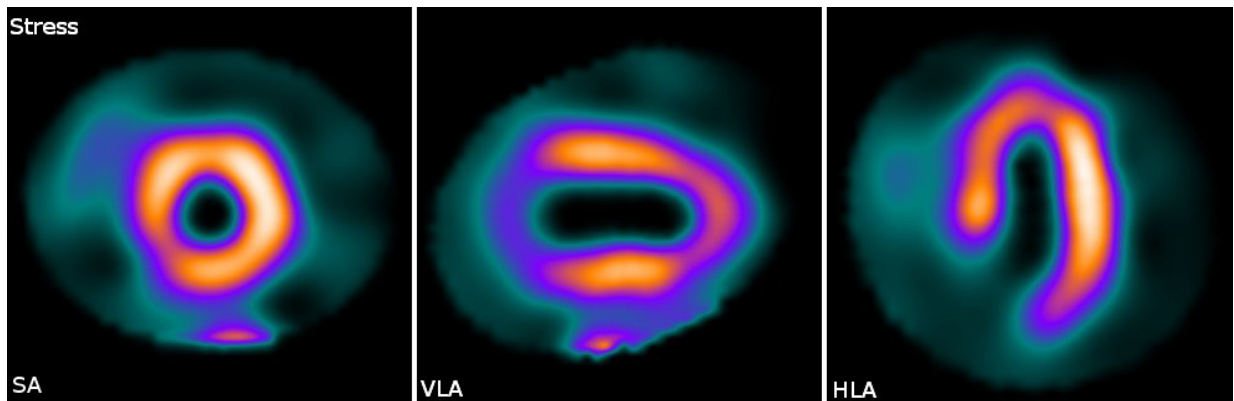
Rest: Tl-201, 2 mCi (female) / 3 mCi (male); 20sec. per stop.

Stress: Tc-99m, 20 mCi (female) / 30 mCi (male); 10sec. per stop.

"The advantage of dual-isotope MPI using UltraSPECT's WBR is the ability to reduce the Tl-201 dose to such a level that the effective radiation dose to the patient is similar to that of Tc-99m protocols without compromising image quality, making the procedure safer for patients," explained Michael Wilk, Ph.D., Director of R&D at UltraSPECT. "Moreover, WBR generates Thallium rest images that are comparable in resolution to the Technetium stress images."



Dual-isotope imaging: reduced-dose, shorter-scan-time Rest images acquired with 2mCi Tl-201 at 20 sec/frame, courtesy of Mayo Clinic.



Dual-isotope imaging: reduced-dose, shorter-scan-time Stress images acquired with 20 mCi Tc-99m at 10 sec/frame, courtesy of Mayo Clinic.

UltraSPECT's Xpress.Cardiac, Xpress3.Cardiac, and Xpress/Xact.Bone™ products are distributed in the USA exclusively by Cardinal Health.



About UltraSPECT

UltraSPECT Ltd., based in Haifa, Israel, with U.S. offices in Auburndale, MA, is a leading provider of products dedicated to enhancing the performance of Nuclear Medicine gamma cameras by shortening acquisition times, increasing image resolution, and providing the potential for reduced radiopharmaceutical doses. Compatible with most major manufacturers' cameras and workstations, these products can be installed within hours, offering a transparent interface between the camera and workstation. Shorter acquisitions improve patient comfort, reducing patient motion, and increase patient throughput without compromising image quality. Higher resolution offers improved lesion localization, raising diagnostic confidence. Lower doses reduce patient exposure to radiation. Xpress.Cardiac and Xpress3.Cardiac cut cardiac imaging times to one-half and one-quarter, respectively, without compromising image quality; alternatively, Xpress.Cardiac and Xpress3.Cardiac enable reducing injection doses by one-half at full scan times and half the scan times, respectively, with no degradation in image quality. Xpress/Xact.Bone can either double the image resolution or cut bone imaging acquisition times by half with no compromise in image quality. UltraSPECT products are distributed in the USA by Cardinal Health (www.cardinalhealth.com).

For more information visit our website: www.ultraspect.com, or contact UltraSPECT Inc. at 1(888) WBR-SCAN (1-888-927-7226).